



# August

## Breathing Places this month

### ✓ Do one thing

Set a **moth trap** to study different species close-up.

Find out more at [www.bbc.co.uk/breathingplaces](http://www.bbc.co.uk/breathingplaces)

### i What to look for

This is the time to see the flowers of **willowherbs**, **evening primrose**, and **bindweed**, which are widespread in many habitats. Look out for the flowers and seed-cases of **yellow rattle** in grasslands. In woods and hedges the first fruits of **lords and ladies** are showing and **blackberries** are ripening. If you cool off down by the sea you may be able to find **dog whelks** and their eggs. The first wintering waders such as **black-tailed godwits**, **turnstones** and **grey plovers** are beginning to arrive for the winter. Offshore, **manx shearwaters** are heading south after breeding off Welsh and Scottish coasts. If you're lucky you may see **dolphins** or even a **minke whale** off the west coast. Fungi are appearing now in woods and fields. You'll smell the weirdly shaped **stinkhorn** before you see it among woodland vegetation. **Young foxes** are playing in fields and quiet urban areas. **Grasshoppers** and **bush crickets** are calling now. You can identify the **bush crickets** by looking for their very long antennae. The best places to look are sunny grasslands and hedgerows.

Find out more at [www.open2.net](http://www.open2.net)

### ? Did you know

Common lizards give birth to live young. In Britain, two other reptiles are also viviparous: the slow-worm and the adder. The common lizard and the adder are found as far north as the Arctic Circle!

Find out more at [www.thebhs.org](http://www.thebhs.org)

## Habitat of the month

**Heathland:** Heather with their purple flowers can be a spectacular sight. In the undergrowth you can hear millions of grasshoppers calling for a mate.

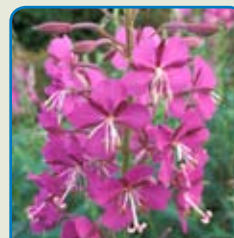
## Photo opportunity

**Reptiles:** They are at their most active this month, with snakes and lizards out hunting for prey. Watch for them warming up in sunny spots. If you can get out early they are still cold and slow, so easier to spot. A telephoto lens will help you get a good close-up shot without disturbing them.

## Photo opportunity



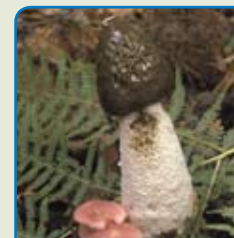
## Have you seen this month



Rosebay Willowherb

DATE:

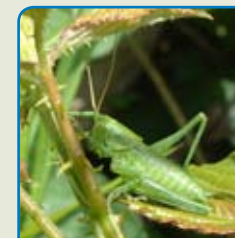
AMOUNT:



Stinkhorn

DATE:

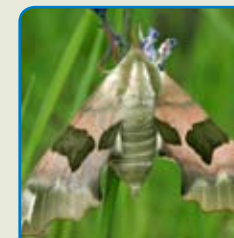
AMOUNT:



Bush Cricket

DATE:

AMOUNT:



Lime Hawkmoth

DATE:

AMOUNT:

Monday	Tuesday	Wednesday	Thursday	Friday	Saturday	Sunday
				1	2	3
4	5	6	7	8	9	10
11	12	13	14	15  RSPB/Wildlife Trust: British Birdwatching Fair Weekend	16  RSPB/Wildlife Trust: British Birdwatching Fair Weekend	17  RSPB/Wildlife Trust: British Birdwatching Fair Weekend
18	19	20	21	22	23	24
25	26	27	28	29	30  Bat Conservation Trust: European Bat Weekend	31  Bat Conservation Trust: European Bat Weekend